

CITY OF COQUITLAM
ZONING BYLAW NO. 3000, 1996

The *Council* of the City of Coquitlam, in open meeting assembled, enacts as follows:

PART 1 SHORT TITLE

101 Citation

This Bylaw may be cited as the “City of Coquitlam Zoning Bylaw No. 3000, 1996”.

PART 2 INTERPRETATION

201 Definitions

For ease of use, all words appearing in *italics* are defined terms in this Bylaw.

In this Bylaw:

ACCESS DRIVEWAY means a designated corridor that provides direct vehicular access between a *lot* line abutting a *street, roadway, or lane* and an *off-street parking* or loading area.

ACCESSIBLE PARKING means a *parking space* reserved for the exclusive use of a *person* with a disability parking permit issued by SPARC BC.

ACCESSIBLE RESIDENTIAL means a *residential use* that allows *persons* with disabilities, without assistance, to be able to approach, enter, pass to and from, and make *use* of an area and its facilities, consistent with the standards outlined by Canada Mortgage and Housing Corporation.

ACCESSORY ADVERTISING means *use* of land, a *building* exterior, or a *structure* or thing, located other than within a *building*, for the purpose of *advertising* or promoting a product, service, place or event, that is for sale or rent, available, held, assembled, manufactured or otherwise located on the same *lot*.

ACCESSORY BUILDING means a subordinate *building* located on the same *lot* as the *principal building* or *use*, the *use* of which is incidental and accessory to that of the *principal building* or *use*.

ACCESSORY CARETAKER means the *use* for the accommodation of one or more employees of a *business* conducted on the same *lot*.

ACCESSORY DWELLING UNIT means a *dwelling unit* ancillary and typically subordinate to the *principal dwelling unit(s)* on the *lot*, and which has not been subdivided from the *principal dwelling unit(s)* under the provisions of either the Land Title Act or the Strata Property Act, and shall be considered a *dwelling unit* for the purpose of determining the Conditions of Use in a Low-Density Residential zone; may include *secondary suite, carriage house, garden cottage* but **excludes** *lock-off unit*.

ACCESSORY EMPLOYEE RESIDENTIAL means the *use* of a dwelling for the accommodation of one or more employees of a *business* conducted on the same *lot*.

ACCESSORY HOME OCCUPATION means a *use* relating to a craft, occupation or profession conducted within a *building* used for *residential use* or *accessory residential use* by a resident of the residential *building*.

ACCESSORY INSTITUTIONAL SUPPORT SERVICES means an institutional *use* that is ancillary to a *residential use* and provides services and care to a *person* or *persons* that are residents of the *building* in which the *use* is located and includes hair stylists, aestheticians, *personal health care*, and *office*.

ACCESSORY LIQUOR STORE means a *use* which is accessory to the *principal use* of a *liquor primary establishment* and provides for the retail sale of alcoholic beverages for off-site consumption, all as licensed by the Liquor Control and Licensing Act.

ACCESSORY OFFICE means a room or rooms in which *business*, clerical, or professional activities are conducted in an *industrial building*, and which is subordinate to an *industrial use*.

ACCESSORY OFF-STREET LOADING means a *use* providing for the loading needs generated by a permitted *use* on the same *lot*.

ACCESSORY OFF-STREET PARKING means a *use* providing for the temporary parking needs generated by a permitted *use*.

ACCESSORY PRODUCE SALES means an *accessory use* providing for the retail sale of *agricultural* products produced on the same *lot*.

ACCESSORY RESIDENTIAL means a *use* ancillary to a *residential use* providing for activities customarily incidental to the accommodation and home life of a *person* or *persons*; and includes incidental horticulture, recreation, storage, and the keeping of three or fewer animals as household pets that are normally kept within a *dwelling unit* and are not kept for financial gain; but does not include repairing or salvaging and using parts of a motor vehicle owned by a *person* not residing in a *dwelling unit* on the same *lot*.

ACCESSORY RETAIL means the sale of goods to the end consumer of product manufactured or wholesaled on the same *lot*.

ACCESSORY SINGLE-DETACHED RESIDENTIAL means the *residential use* of one *dwelling unit* by the owner or operator of a *business*, or a leader of a place of worship conducted on the same *lot*.

ACCESSORY STREET VENDING means the sale of goods, wares, merchandise or foodstuffs by a street vendor from a self-contained vehicle, cart, or other mobile apparatus, as regulated under the “City of Coquitlam Street Vending and Special Event Vending Bylaw No. 4308, 2012” currently in force.

ACCESSORY UNENCLOSED STORAGE mean the outdoor storage of goods or materials incidental to the *principal use* on a *lot*.

ACCESSORY USE means a *use* subordinate to and customarily associated with or incidental to, the *principal use* of the *lot* upon which the *accessory use* is located.

ADAPTABLE UNIT means a *dwelling unit* with flexible features that can accommodate occupants' changing requirements easily and inexpensively and that conforms to Section 3.8.5 of the BC Building Code, as amended, restated or replaced from time to time.

ADULT ENTERTAINMENT USE means a store that sells, rents, *uses* or shows an object (other than a contraceptive device), commodity, good, material, device, machine, service or entertainment which is designed or intended to be used in or is a depiction of, a sexual act as defined in the Motion Picture Act Regulations (B.C. REG. 260/86).

ADULT VIDEO STORE mean any premises licensed as an adult film retailer under the Motion Picture Act R.S.B.C 1996, C.314, where adult motion pictures or videos or films that produce or reproduce adult motion pictures are available for sale, rental or *use*.

ADVERTISING means a *use* of a *lot*, the exterior of a *building*, or of a *structure* of thing located other than within a *building*, including billboards, providing for the *advertising* or promoting of a product, service, place or event.

AGRICULTURAL means *use* providing for the growing, rearing, cultivating, producing and harvesting of *agricultural* products, including the preliminary grading of such products for shipments; specifically includes mushroom growing, the keeping of dogs, horses, cattle, other livestock, swine, furbearing animals, poultry, pigeons, doves, bees, rabbits and other animals and birds; **excludes** all manufacturing and processing other than primary grading, *cannabis production, cannabis processing, cannabis retail*.

ANIMAL SHELTER means a facility which may include indoor or outdoor runs for the impoundment of dogs, cats, and other animals who are either unlawfully at large, lost, abandoned or removed from their owner's premises due to mistreatment; **excludes** *veterinary service*.

APARTMENT means a *building* used for three or more *dwelling units*, and includes such a *building* subdivided under the Strata Property Act; **excludes** *townhouses* and *small-scale residential*.

APPROVING OFFICER means the *Approving Officer* for the *City* as designed by *Council* and as defined under the Land Title Act.

ASSEMBLY means the gathering of *persons* for religious, charitable, philanthropic, cultural, recreational or social purposes, including places of worship, auditoriums, meeting rooms, social halls, trade and convention centres, child-minding services, youth and seniors' centres, and group camps; **excludes** *casino gaming, intensive commercial recreation, extensive commercial recreation*.

ASSEMBLY CHILD CARE means a *use* providing care for nine or more children in facilities licensed under the provincial Child Care Licensing Regulation.

ASSISTED LIVING, REGISTERED, means housing and care that is registered under the Community Care and Assisted Living Act which provides hospitality and personal care services under the Act.

AUTOBODY REPAIR means the repair of motor vehicles that have been damaged in accidents or that are being restored and can include the painting of motor vehicles.

AVERAGE BUILDING GRADE means the mathematical average of the elevation measured from the lower of *natural grade* or *finished grade* at each of the four outermost exterior corners of a *building* and any attached enclosed *structure*.

AVERAGE SLOPE means the slope within the *building siting area*.

AWNING means a weather protection device composed of non-rigid materials supported entirely from the exterior *wall* of a *building* by a fixed or retractable frame, and where at least 80 percent of the length of the *awning* projects a minimum of one metre from the face of a *building*.

BEDROOM means a room within a *dwelling unit* intended or likely to be used for sleeping purposes.

BELOW-MARKET RENTAL HOUSING means *dwelling units* within *purpose-built rental housing* that are operated by the British Columbia Housing Management Commission or a housing operator approved by the *City* and for which the rent charged is at least 25% below-market rent, all as secured by a housing agreement or registered covenant containing such other provisions as the *City* may require.

BELOW-MARKET RENTAL UNIT means a *dwelling unit* in a *purpose-built rental* for which the rent charged is at least 25% below market rent, as secured by a housing agreement or registered covenant.

BEVERAGE CONTAINER RETURN CENTRE means a *use* providing for the collection, sorting, preparation for shipping and temporary storage of empty beverage containers, and the dispensing of deposit refunds; **excludes** processing or recyclable material other than the compaction of glass containers.

BICYCLE PARKING, LONG-TERM means a bicycle *parking space* for employees or residents of the *building*.

BICYCLE PARKING, SHORT-TERM means a bicycle *parking space* for visitors or patrons of the *building*.

BOARDING means the rental and occupation of a *sleeping unit* which is attached to or part of a *dwelling unit*, either with common *cooking facilities*, or where regular meals are provided; includes bed and breakfast accommodation.

BUILDING means a *structure* wholly or partly enclosed by a roof supported by air, *walls* or columns, and used for the shelter or accommodation of *persons*, animals, chattels or things; **excludes** tents and *recreational vehicles*.

BUILDING BYLAW means the *City of Coquitlam* Bylaw No. 3598, 2003 as amended or superseded from time to time.

BUILDING INSPECTOR means the *General Manager Planning and Development* or his duly authorized designate.

BUILDING SITING AREA means the area of a *lot* contained within the required setbacks.

BUSINESS means carrying on a *commercial* or *industrial* undertaking of any kind or nature or the providing of professional, personal or other services for the purpose of gain or profit.

BUSINESS AND HOUSEHOLD SERVICE means an establishment intended to serve the daily or occasional needs of businesses or households, including appliance rental or repair shops, furniture repair and upholstering shops, office equipment repair shops, photocopying and printing shops, and similar establishments; **excludes** *autobody repair*.

BYLAW ENFORCEMENT OFFICER means any *person* appointed by *Council* from time to time to enforce the *City's* Bylaws.

CANNABIS PROCESSING means the indoor manufacturing, testing, or research of cannabis or cannabis products, and may include storage, packaging, and wholesaling distribution of cannabis products, as permitted under the *Cannabis Act* (S.C. 2018, c. 16) as amended from time to time, but **excludes** *cannabis production, cannabis retail*.

CANNABIS PRODUCTION means the indoor growth, cultivation, or production of cannabis, and may include related operations such as drying and curing, storage, packaging, and wholesaling distribution of raw cannabis material, as permitted under the *Cannabis Act* (S.C. 2018, c. 16) as amended from time to time, but **excludes** *cannabis processing, cannabis retail*.

CANNABIS RETAIL means the sale of cannabis, including any products containing cannabis, for personal use, as permitted under the *Cannabis Control and Licensing Act* (SBC 2018, c. 29) as amended from time to time.

CANOPY means a weather protection device composed of rigid materials supported entirely from the exterior *wall* of a *building* by a fixed frame and where at least 80 percent of the length of the *canopy* projects a minimum of one metre from the face of a *building*.

CASINO GAMING means a *use* involving games chance as permitted by the *Gaming Control Act* pursuant to the Criminal Code (Canada).

CHARACTER STREET means a *street* frontage delineated as such in the Official Community Plan and along which development will be encouraged to provide a continuous, active, ground-oriented *commercial, civic, or assembly* storefront façade or streetwall.

CHEQUE CASHING BUSINESS means an establishment, other than a bank or credit union that cashes cheque in exchange for a fee or percentage of the cheque's face value, or offers loans or advances in contemplation of a future wage or paycheck to be received.

CHILD CARE means a *use* providing care for eight or fewer children in facilities licensed under the provincial Child Care Licensing Regulation.

CITY means the *City* of Coquitlam, a corporation under the Local Government Act, or the area incorporated as the *City* of Coquitlam, as the context requires.

CIVIC means a *use* providing for community or educational functions, including *primary or secondary schools, post-secondary institutions, hospitals, community centres, courts, police stations, jails, libraries, museums, parks, playgrounds, cemeteries, highways, works yards and waterways*.

COMMERCIAL means a *use* of providing for the sale, rental or repair of goods or provision of services to a *person, business* or household; **excludes** *service station use*.

COMMERCIAL KITCHEN means a *commercial use* providing for the preparation of food or beverages for consumption off-premises only, which does not offer sales or service to patrons on the premises, and which may be used by catering services, online *restaurants*, and similar *uses*.

COMMERCIAL SCHOOL means educational facilities that provide instruction in language, religion, the arts, athletics, business, self-improvement, or academics and which may include a *trade school* but **excludes** *primary or secondary schools and post-secondary institutions*.

COMMON AMENITY AREA means an outdoor or indoor area specifically designed for *use* by all residents living on site for cultural, social and recreational activities.

COMMUNITY CARE USE means a *use* providing for the care of *persons* in premises licensed or registered under the Community Care and Assisted Living Act **excluding** those *uses* licensed under the Child Care Licensing Regulation to that Act.

CONCEALED PARKING means an *off-street parking use* located under cover below the grade of the site, or located within a *principal building*.

CONGREGATE HOUSING AND CARE means an *accessible residential multiple-family building* which contains two or more Licensed Residential Care units, Assisted Living units or Supportive Housing units which are supplemented by communal dining facilities, and/or housekeeping or personal care services.

CONTRACTORS EQUIPMENT means equipment typically associated with construction and other trades, and includes, but is not limited to, backhoes, excavators, flatbed trucks, tow trucks and other construction or *commercial* trades vehicles or equipment.

CONTRACTOR SERVICE means a *use* that provides for *building* and road construction services including landscaping, concrete, logging, electrical, excavation, drilling, carpentry, drywall, flooring, roofing, heating, and plumbing or similar services of construction nature which require on-site storage and/or warehouse space.

CONTROLLED SUBSTANCE means a *controlled substance* as defined and described in the Federal Controlled Drugs and Substances Act, R.S.C. 1996, c.19 (Canada).

CONVENIENCE RETAIL means the sale of goods often acquired on a daily basis and includes snack foods and candy, non-alcoholic beverages, prepared and fresh foods, personal care items, tobacco products, flowers, magazines and newspapers, seasonal items such as Christmas trees, and similar items.

COOKING FACILITIES means any electronic, electrical gas, mechanical or manual equipment by which food of any sort can be cooked, heated, steamed or baked and including, without limitation, conventional ovens, microwaves, convection ovens, toaster ovens, cook tops, hot plates, camping stoves, barbecues, crock pots and electric frying pans, rice cookers, woks, grills and griddles, but **excludes** an electric kettle that can be used for heating water.

COUNCIL means the *Council* of the *City* of Coquitlam.

CRAWL SPACE means the space between the underside of the floor system above and the ground surface or slab below, having a maximum vertical distance not exceeding 1.2 metres.

DENSITY means a measurement of development intensity on a *lot* which can be measured either by *dwelling units* per hectare, by the ratio of *gross floor area* or *floor area*, to *lot area*.

DEVELOPMENT PERMIT AREA means an area of land designated as a *development permit area* in Official Community Plans or other *Council* policies, as amended from time to time.

DRIVE-THROUGH means an establishment where customers are provided with a good or service without leaving their vehicles, typically through a staffed window or automated machine.

DWELLING UNIT means one or more rooms which comprise of a self-contained housekeeping unit with a separate entrance, used or intended to be used as a domicile by one or more *persons* and usually containing one *kitchen*, living, sleeping and sanitary facilities.

ELECTRIC VEHICLE means a vehicle that *uses* electricity for propulsion, and that can *use* an external source of electricity to charge the vehicle's batteries.

ELECTRIC VEHICLE CHARGING SERVICE means an accessory *commercial use* providing the retail sale of electricity for *electric vehicle* charging using *Level 2 Charging* or *Level 3 Charging* but does not include *electric vehicle* charging infrastructure as required under Section 714.

ELECTRIC VEHICLE ENERGY MANAGEMENT SYSTEM means a system that controls the process of connecting, disconnecting, increasing and reducing electric power to *electric vehicle supply equipment* loads, and which system may be comprised of one or more monitors, communications equipment, controllers, timers and other applicable devices.

ELECTRIC VEHICLE SUPPLY EQUIPMENT means a complete assembly consisting of conductors, connectors, devices, apparatus, and fitting installed specifically for the purpose of power transfer and information exchange between a branch electric circuit and an *electric vehicle*.

ELECTRIC CONNECTION FACILITY means a *use* providing for the collection of electronic equipment (limited to products specified in the Recycling Regulation under the Environmental Management Act, as amended), sorting, preparation for shipment and temporary storage of electronic equipment, and the associated administrative functions; **excludes** processing of dismantling of any kind.

ELECTRONIC GAMING means a game of chance or skill played on electronic gambling device, computer or machine as regulated by the B.C. Gaming Policy and Enforcement Branch, but **excludes** lottery games offered at retail points of sale as regulated by the B.C. Lottery Corporation.

EMERGENCY SHELTER means a facility offering temporary overnight accommodation at no cost.

EMPLOYMENT LIVING UNIT means space within a *building* or *structure* that can accommodate a permitted *commercial use* within an at-grade unit, a permitted *residential use* within an at-grade unit or combination of the two.

ENCLOSED BALCONY means an external platform or patio which is enclosed by a fully transparent and retractable system above the level of its protective rail or *wall*, and below any roof feature, as regulated under Section 529.

ENERGIZED OUTLET means a connected point in an electrical wiring installing at which current is taken to supply utilization equipment.

ENTERTAINMENT FACILITY means movie theatres, billiard and pool halls, bowling alleys and similar facilities.

ESCORT SERVICE means any *person* carrying on the *business* of providing or furnishing escorts or partners for social occasions.

EXOTIC DANCING means live entertainment involving any exposure for the genitals, pubic region, buttocks, anus, or female breast below the top of the areola, of any *person*.

EXTENSIVE COMMERCIAL RECREATION means a *use* providing for extensive open-air recreation facilities and the minor retail sales and services reasonably incidental to such facilities; includes drive-in theatres, driving ranges, firing ranges, golf courses, marinas, racetracks, ski facilities, sports clubs and stadiums.

EXTERIOR CLADDING means those components of a *building* which are applied to the *exterior sheathing* and are exposed to the outdoor environment to provide protection against wind, water and vapour. For purposes of this Bylaw, *exterior cladding* may include cladding materials, exterior insulation, vapour barriers and vented air cavities.

EXTERIOR LOT CORNER means the point of intersection of the *exterior side lot line* and the *front lot line*.

EXTERIOR SHEATHING means an exterior *wall* system that achieves structural *building* support without the application of an applied *exterior cladding*. For purposes of this Bylaw, *exterior sheathing* may be comprised of solid construction material (e.g. concrete, plywood or wood composite) plus either embedded or exterior insulation. Interior finishing *walls* and interior insulation shall not be considered part of the *exterior sheathing*.

EXTERIOR SIDE LOT LINE means the *lot line* of a corner *lot* extending from the *front lot line* to the *rear lot line* and adjacent a *street*. Where the *lot* is a *strata lot*, the *exterior side lot line* is defined by *roadway* instead of *street*.

FAMILY means two or more *persons* related by blood, marriage, common-law relationship, adoption or foster parenthood.

FENCE means a *structure*, not being a *building*, intended for the purpose of total or partial physical and/or visual separation or enclosure of a property or portion thereof; includes a *wall*, not being part of a *building*, intended for the purpose of total or partial physical and/or visual separation or enclosure of a property, does not include retaining *wall*. Materials used to construct a *fence* are limited to wood, masonry materials (**excluding** poured concrete), metal pre-cast manufactured perforated or decorative concrete blocks or panels, and any combination thereof.

FINISHED GRADE means the elevation of the ground at any point adjoining each exterior wall of a *building* or *structure*.

FINISHED GROUND ELEVATION means the elevation of the ground at the four outermost exterior walls of a *building* or *structure*.

FIRE CHIEF means the *Fire Chief* appointed by *Council* from time to time.

FLOOR AREA means the sum of the areas of each floor of a *building* or that portion of the area of the floor of a *building*, including above-grade *concealed parking* and *accessory off-street parking structures*, measured to the *exterior sheathing* of the *building* or the centerline of the demising wall, **excluding** completely enclosed and covered garbage and recycling facilities, *underground parking*, and portions of an *underground structure* used for storage and common maintenance, mechanical, and electrical purposes.

FLOOR AREA RATIO means the figure obtained by dividing the *floor area* by the *lot area*.

FRONT LOT LINE means the *lot line* or lines common to the *lot* and a fronting *street*, or where there is more than one fronting *street*, the *lot line* or lines common to either one of the fronting *streets*; for a panhandle-shaped *lot*, the *lot line* which is the *rear lot line* of the *lot* adjacent to the panhandle portion, is considered to be the *front lot line*. Where the *lot* is a *strata lot*, the front line is defined by a *roadway* instead of a fronting *street*.

FRONT YARD means the portions of a *lot* located between the *front lot line* and the outermost projection of the front walls of a *principal building* and extends across the full width of the *lot*.

GENERAL MANAGER ENGINEERING AND PUBLIC WORKS means the *General Manager Engineering and Public Works* appointed by *Council* from time to time.

GENERAL MANAGER PLANNING AND DEVELOPMENT means the *General Manager Planning and Development* appointed by *Council* from time to time.

GOLF COURSE USE means golf courses and all *uses* normally associated with golf courses.

GROCERY STORE means a *business* that retails groceries, including dairy products, produce, preserved and prepared foods, meat, fish, non-alcoholic beverages, baked goods, household supplies, and similar items; **excludes** alcoholic beverages.

GROCERY STORE WITH WINE ON THE SHELF means a *business* that retails groceries, including dairy products, produce, preserved and prepared foods, meat, fish, non-alcoholic beverages, baked goods, household supplies, and similar items; **excludes** alcoholic beverages except for the sale of wine products (including cider, mead and sake) for off-site consumption, with a wine-on-the-shelf model, as licensed by the Liquor and Cannabis Regulation Branch (LCRB).

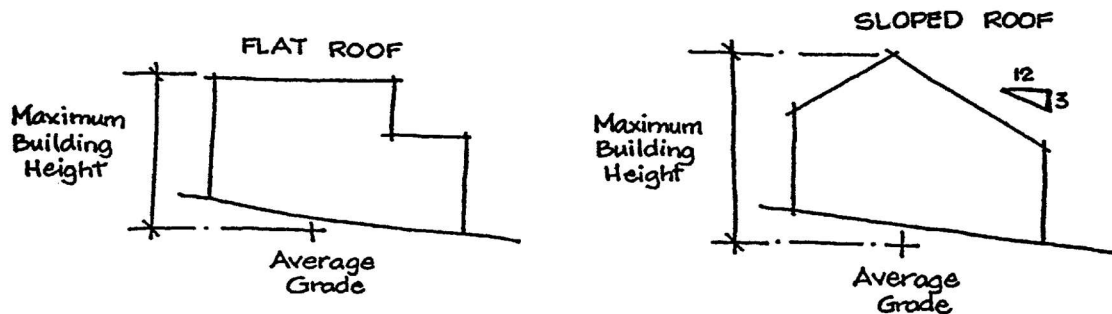
GROSS FLOOR AREA means the total area of all enclosed floors in each *building* on a *lot* measured to the *exterior sheathing* of the *building*, **excluding**:

- (1) *concealed parking areas*;
- (2) *long-term bicycle parking*;
- (3) parts of the *building* below *finished grade* elevation that are not *habitable rooms*;
- (4) areas used for common maintenance, mechanical, or electrical purposes;
- (5) racking systems that do not increase *building* occupancy load;
- (6) *common amenity areas*;
- (7) completely enclosed and covered garbage and recycling facilities; and
- (8) *enclosed balconies*.

GROSS VEHICLE WEIGHT RATING means the weight indicated on a motor vehicle, as required by a license under the Commercial Transport Act or Motor Vehicle Act, as the case may be.

HABITABLE ROOM means a room used for cooking, eating, sleeping or human occupancy; **excludes** bathroom, utility room, workroom, furnace room, *crawl space*, garage and storage room.

HEIGHT means the vertical distance from the *average building grade* to the top of the parapet for flat roofs, defined as having a pitch of less than 3 in 12 covering at least 80% of all roof surfaces as measured in plan view, or to the uppermost peak for sloped roofs, as shown in the following diagram:



HOSPITAL means a non-profit institution that provides medical care to sick, injured or infirm patients, as regulated in the Hospital Act.

INDUSTRIAL means a *use* providing for the manufacturing, processing, fabricating, assembling, storing, transporting, distributing, wholesaling, testing, servicing, repairing, wrecking, recycling or salvaging of goods, materials or things for direct *use* or resale to individual *business* customers, and not for the general public.

INDUSTRIAL EQUIPMENT means machinery equipment, or vehicles exceeding a *gross vehicle weight rating* of 4,500 kilograms, all of which are typically used in construction, manufacturing assembling and processing operations or *agricultural* production.

INDUSTRIAL OFFICE means a *use* in which *business*, clerical, or professional activities are conducted in an Industrial and Enterprise zone, limited to the following *uses*: architectural and engineering services, data processing and related services, janitorial services, laboratories, labour organization, scientific and technical research, development and test facilities, and security guard and patrol services.

INTENSIVE COMMERCIAL RECREATION means a *use* within an enclosed *building* for sports and active recreation where patrons are predominantly participants and any spectators are incidental, including athletic clubs, dance studios, health and fitness clubs, racquet clubs, martial arts studios, and similar *uses*.

INTERIOR SIDE LOT LINE means the *lot* line or lines, not being the front or *rear lot line*, common to more than one *lot* or to the *lot* and a *lane*.

KITCHEN means a room used for the preparation, cooking or eating of food and containing *cooking facilities*, a sink, upper and lower cabinetry and ventilation for the *cooking facilities*.

LANDSCAPE SCREEN means a barrier composed of a continuous row of shrubs, trees, compact evergreen hedges or any combination thereof.

LANE means a highway that is not primarily used for general traffic circulation and the right-of-way is narrower than a *street*.

LEVEL 2 CHARGING means a Level 2 *electric vehicle* charging level as defined by SAE International's J1772 standard.

LEVEL 3 CHARGING means an *electric vehicle* charging level that uses a direct current connection to an electrical system for rapid recharging of *electric vehicles*.

LICENSE INSPECTOR means the *License Inspector* appointed by *Council* from time to time.

LICENSED RESIDENTIAL CARE means housing and care that is licensed under the Community Care and Assisted Living Act which provides continuous profession care for residents.

LIQUOR MANUFACTURING means the manufacturing of alcoholic beverages that are subject to the BC Liquor Control and Licensing Act and its regulations.

LIQUOR PRIMARY ESTABLISHMENT means a *business* licensed as a liquor primary establishment by the BC Liquor and Cannabis Regulation Branch, including bars, pubs, and night clubs; **excludes** social halls, stadiums and other *businesses* that are licensed to serve alcohol on an occasional or *accessory* basis.

LIQUOR STORE means a *use* where the retail sale of alcoholic beverages for off-site consumption is the *principal use* and is licensed under the Liquor Control and Licensing Act; may contain *beverage container return centre* as an *accessory use* when contained wholly within a *building*.

LOCK-OFF UNIT means an accessory *dwelling unit* contained within a strata-titled *dwelling unit* in an *apartment* or a *townhouse* that:

- (1) is not less than 29 m² and not more than 35 percent of the gross floor area of the *dwelling unit* in which it is located;
- (2) is not a separate *strata lot*;
- (3) contains a secondary kitchen area with a range or microwave oven and built-in cooktop, refrigerator, sink, counter, cabinets and venting, at least one closet, and a bathroom with a toilet, sink and bathtub or shower;
- (4) is wired for independent telecommunications connection prior to occupancy and remains so;
- (5) is separated by a lockable access door from the main *dwelling unit* and can be connected directly to the main *dwelling unit* by opening the access door; and
- (6) has a separate lockable entrance door providing direct access to the exterior of the main *dwelling unit*.

LOT means any parcel, block or other area in which land is held or into which land is subdivided, including a *strata lot* as defined.

LOT AREA means the total horizontal area within the property lines of a *lot*; except that:

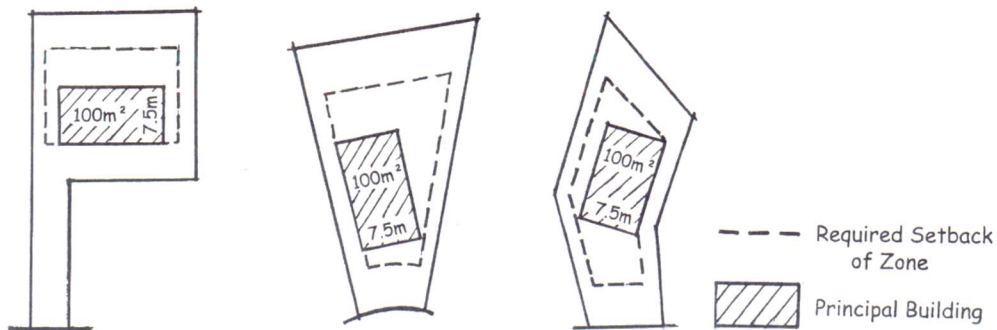
- (1) in the RM-1 zone, *lot area* means the total area of a *lot* plus one-half of adjacent *streets, lanes*, and dedicated public parks to a maximum of 13.5 metres, minus land covered by a natural body of water as defined by land survey, and land in easement for electrical or gas transmission lines, except where such easement is upon dedicated public park, multiplied by 75%. However, in no case shall the *lot area* be less than the area contained within the legal *lot* lines of a property minus land covered by natural body of water as defined by land survey, and land in easement for electrical or gas transmission lines; and in all zones, where a *lot* is affected by more than one zone designation, the portion within each zone designation is to be determined separately as the applicable *lot area* for each affected portion.
- (2) in the RT-2 zone, *lot area* means the area of the *lot* minus land covered by natural body of water, as defined by its high water mark, land below the edge of a ravine, as defined by land survey, and land is easement for electrical or gas transmission lines.
- (3) to determine *lot area* for the purpose of calculating *density* for properties requiring road dedication and zoned or rezoning to the RT-1 zone, a Low-Density Residential zone, *Apartment Residential* zone, and/or *Commercial* zone, refer to Section 517 (2) of this Bylaw.

LOT COVERAGE means the area covered by *buildings* and *structures* as measured from the outermost *walls* and/or supporting columns expressed as a percentage of the *lot area*.

LOT SIZE means the amount of land occupied by one *lot* on a plan of *subdivision* or registered Land Title Certificate and may be measured by area, width, depth or any combination thereof.

LOT WIDTH means:

- (1) on a rectangular *lot*, the horizontal distance between side *lot* lines measured at the *front lot line*; and
- (2) on an irregularly shaped *lot*, the sufficient area to permit a rectangular-shaped first floor of a *principal building*, having not less than 100 m² in area, a length of not less than 7.5 metres on one side, and meeting the setback requirements of this Bylaw as shown in the following diagram



except that, to determine *lot width* for properties requiring road dedication and zoned or rezoning to RT-1 or a Low-Density Residential zone, refer to Section 517 (3) of this Bylaw.

MANAGER FINANCIAL SERVICES means the *Manager Financial Services* appointed by *Council* from time to time.

MANDATORY COMMERCIAL STREET FRONTAGE means a *street* frontage delineated as such in an Official Community Plan and along which development will provide a continuous, active, ground-oriented *commercial, civic* or *assembly* façade or street-wall.

MANEUVERING AISLE means an area for motorized vehicles to maneuver directly into or out of adjacent *off-street parking* or *loading spaces*.

MARKET RENTAL HOUSING means *dwelling units* within *purpose-built rental housing* for which the monthly rent is charged as market rent, all as secured by a housing agreement or registered covenant containing such other provisions as the *City* may require.

MASSAGE PARLOUR means a *business* that will offer massage or body rub services, or either of them, to be performed by one or more individuals who are not registered massage therapists in the Province of British Columbia.

MEDICAL HEALTH OFFICER means the *Medical Health Officer* as appointed from time to time by the appropriate health authority.

MICROMOBILITY PATH means a highway that is primarily used for small, lightweight, transportation options typically designed for short- and medium-distance travel, including bikes, scooters and skateboards, and their electrified forms.

MINI-WAREHOUSE means a completely enclosed *building* or series of completely enclosed *buildings* that include separate storage units which are rented to customers having exclusive and independent access to their respective units for the storage of residential, recreational or *commercial* goods and includes the accessory sale of packing supplies.

MOBILE HOME means a *structure* manufactured as a unit, intended to be occupied in a place other than at its manufacturer, and designed as a *dwelling unit*.

MOBILE HOME PARK mean a *use* providing for the accommodation of *persons* in two or more *mobile homes*, and includes permitted sales.

MOBILE HOME SPACE means an area of land designated for the installation of one *mobile home* with permissible additions and situated within a *mobile home park*.

MODULAR CONTAINER means a purpose-designed container for holding of goods, which is intended to be placed on a ship, truck or railcar.

MOTOR VEHICLE SALES AND SERVICE means the sale, lease or rental of automobiles, *recreational vehicles*, boats, *trailers* and similar conveyances, the *accessory retail* sale of motor vehicle parts and accessories, and motor vehicle maintenance and minor repairs; **excludes** *autobody repair*.

NATURAL GRADE with reference to residential development in established neighbourhoods where the majority of *lots* have been developed with *single-detached* or infill housing for more than 4 years at the date of adoption by Bylaw 2418, 1992 and not requiring *subdivision*, means the undisturbed ground level or elevations as determined by a registered land surveyor on a *lot* at each of the points used in calculating the *average building grade*; whereas in reference to residential development within areas which require *subdivision*, *NATURAL GRADE* means the elevations shown on the grading plan for the *subdivision*.

NON-ACCESSORY OFF-STREET PARKING means *use* providing for a “stand-alone” parking *lot* and/or *structure* for temporary parking needs not accessory to a *use*.

NON-MARKET HOUSING means self-contained, independent living *dwelling units* targeted to low and low-to-moderate income households, that may include *purpose-built rental housing* and co-operative housing and are owned and operated by a housing operator approved by the *City*, all as secured by a housing agreement or registered covenant containing such other provisions as the *City* may require.

OFFICE means a *use* in which business, clerical, financial or professional activities are conducted that do not include the sale of goods from the premises and includes *industrial offices*, but **excludes** *personal service uses*.

OFF-STREET PARKING means a use providing *parking spaces* for temporary storage of vehicles not on a public *street* or right-of-way, and includes *accessory off-street-parking* and *non-accessory off-street parking*.

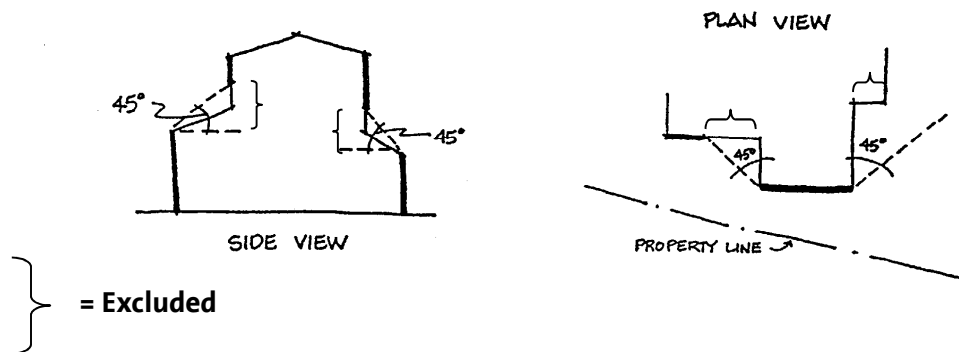
OUTERMOST BUILDING FACE means a vertical plane parallel to a property line and passing through those points of the exterior *wall* of a *building* that are closest to the property line. The *wall* establishing the *outermost building face* must be that *wall* of the *building* closest to the property line and must be situated entirely within the *building siting area*.

PARKING SPACE means a space within a *building* or a parking area for the parking of one vehicle, **excluding** driveways, ramps, columns, office and work areas.

PAWN means the deposit of property as a pledge or collateral security for a debt.

PAWNBROKER/PAWNSHOP means an establishment that carries on the trade or *business* of taking goods and chattels in *pawn*, or who keeps a store, shop or other premise for the purpose of carrying on such trade or *business*.

PERIMETER WALL AREA means the total area of exterior *walls* facing in one direction measured from the *finished grade* to the underside of the eaves. *Walls* or portions of *walls* situated within an angle of 45 degrees (in plan or vertical section view) from a *wall* forward of the *wall* or portion of *wall* under consideration must not be included in the calculation of *perimeter wall area* shown in the following diagram.



PERIMETER WALL HEIGHT means the vertical distance measured at and up the *wall* establishing the *outermost building face*, from the lower of *natural grade* or *finished grade* to the top of the roof surface of the *building*. Gable ends and decks (located entirely within the *building siting area*) must not be included in the calculation of the average *perimeter wall height*. For the purposes of the definition of *perimeter wall height*:

- (1) a plane defined by a vertical face of a roofed porch or enclosed deck must be considered a *wall*, and

- (2) an enclosing element of a *crawl space* or basement must not be considered a *wall* unless such *crawl space* or basement is surmounted by a *storey*.

PERSON means any legal entity and includes an individual, firm, society, cooperative, association, organization, partnership, trust company or corporation.

PERSONAL HEALTH CARE means the provision of health care services to a *person* and includes medical clinics, dentistry, optometry, chiropractics, acupuncture, physiotherapy, naturopathy, massage therapy, pharmacies, and similar services; **excludes** *hospitals, private hospital and massage parlour*.

PERSONAL SERVICE means a *commercial use* that provides services to a *person* or their personal property and includes hair stylists; aestheticians, including permanent and semi-permanent makeup tattoos; dry cleaners and laundromats; shoe and jewelry repair; tailors; *veterinary service; personal health care*; and similar services but **excludes** *tattoo parlours*.

PET CARE SERVICE means a facility for non-veterinary services for domestic animals, such as animal day care, overnight lodging, grooming, and pet training services; **excludes** animal breeding.

POST-SECONDARY INSTITUTION means an educational institution authorized by the College and Institute Act or the University Act, or other post-secondary institution authorized by a Provincial statute.

PRIMARY OR SECONDARY SCHOOL means an educational institute regulated under the School Act or the Independent School Act, providing academic instruction generally to children between 5 and 18 years old, and may include a boarding school.

PRINCIPAL BUILDING means a *building* that accommodates the *principal use* of a site, and may accommodate one or more *accessory uses*.

PRINCIPAL DWELLING UNIT means a *dwelling unit* that comprises or forms a component of the *principal use* on a *lot*; which typically comprises a unique real estate entity, either through the provisions of the Land Title Act or the Strata Property Act; and which has a unique civic address recognized by the *City*.

PRINCIPAL USE means the main purpose for which land, *buildings* or *structures* are used, and in respect to *small-scale residential use*, the *principal use* means any combination of *small-scale residential dwelling units* to the extent permitted in the applicable zone.

PRIORITY UNIT TYPES means *below-market rental units, non market housing rental units, accessible residential rental dwelling units* and *three-plus bedroom rental units*.

PRIVATE HOSPITAL means a *use* providing housing and medical care of sick, injured or infirm patients as regulated in the Hospital Act; includes seniors' housing facilities and convalescent homes.

PUBLIC SERVICE means a *use* providing for the servicing of the *City*, where such *use* is established by the *City*, by another government body, or by a corporation or company operating under the Utilities Commissions Act, includes broadcasting transmission facilities.

PURPOSE-BUILT RENTAL means a *building* containing four or more *dwelling units* that is purposely designed and built to provide a rental form of accommodation that is affordable and that is subject to a housing agreement or registered covenant that requires that the *dwelling units* only be rented, and not individually sold or transferred, during the life of the *building*.

PURPOSE-BUILT RENTAL HOUSING means *dwelling units* in a *building* that is purposely designed and built to provide a rental form of accommodation, which may include, without limitation, *market rental housing*, *below-market rental housing*, or *non-market housing*, and subject to a housing agreement or registered covenant that requires the *dwelling units* only be rented, and not stratified or individually sold or transferred, during the later of 60 years from the date when the final occupancy permit is issued for the originally constructed *dwelling units* and the life of the *building*, and containing such other provisions as the *City* may require.

REAR LOT LINE means the *lot* line opposite to and most distant from the *front lot line* or, where the rear portion of the *lot* is bounded by intersecting side *lot* lines, is deemed to be the point of such intersection.

REAR YARD means the portions of a *lot* located between the *rear lot line* and the outermost projection of the rear *walls* of a *principal building* and extends across the full width of the *lot*.

RECREATIONAL VEHICLE means a temporary living accommodation for travel or recreational purposes and includes motor home, camper, travel *trailer*, tent *trailer* or boat but **excludes** a *mobile home*.

RECYCLING DEPOT means a facility used for collecting, sorting and redistributing recyclable materials.

RESIDENTIAL RENTAL TENURE means any of the following:

- (1) a tenancy governed by a tenancy agreement as defined in the Residential Tenancy Act or, in the event that the Act is repealed and not replaced, that contains the standard terms set out in the Residential Tenancy Regulation B.C. Reg. 477/2003;
- (2) a tenancy in which the landlord is:
 - (a) the City of Coquitlam;
 - (b) the Metro Vancouver Housing Corporation;

- (c) the British Columbia Housing Management Commission;
 - (d) a society incorporated or continued under the Societies Act, other than a member-funded society as defined in section 190 of the Act, whose purposes include the provision of affordable rental housing; or
 - (e) a partnership between any two or more such entities;
- (3) an occupancy between an individual and an owner, leasee, or operator of a *congregate housing and care* facility in which the individual occupies and the occupancy is not otherwise a tenancy referenced in Sub-sections (1) or (2) above; and
- (4) an occupancy between a member and a non-profit housing cooperative incorporated or continued under the Cooperative Association Act whose purposes include the provision of affordable rental housing.

RESIDENTIAL SALES USE means a *commercial use* for the marketing of residential developments or residential land.

RESIDENTIAL USE means a *use* providing for the accommodation and home life of one or more persons; **excludes** *tourist accommodation, private hospital, assembly use.*

RESOURCE means a *use* providing for the conservation, management and extraction of primary forest, mineral and other *resource* materials; includes the preliminary grading, cutting or crushing of those materials for shipment, and the accessory storage of motor vehicles and equipment; **excludes** the storage of derelict motor vehicles, scrap or junk, manufacturing of any product, or any processing not specifically included.

RESTAURANT means a *use* providing for the sale of prepared food or beverages on the premises for on-site and/or off-site consumption; includes family restaurants, fast-food establishments, cafes, coffee shops, and food-primary licensees but **excludes** the retail sale of alcoholic beverages for off-site consumption.

RETAIL – GENERAL means the sale or rental of goods for *business* or household *use*, including stationery and other office supplies, equipment, appliances, interior decoration, electronics, flooring, furniture, garden supplies and machinery, hardware, kitchenware, lighting, plumbing, paint, heating and mechanical systems, hot tubs and pools, seasonal items such as Christmas trees, and similar items; **excludes** *wholesale sales.*

RETAIL – PERSONAL GOODS means the sale or rental of goods intended for personal *use*, and includes books, clothing, footwear, hardware, jewelry, musical instruments, portable electronics, pets, personal care items, sporting goods, stationery supplies, toys, and similar items; **excludes** *wholesale sales.*

ROADWAY means a driveway which is not a *street* or *lane* over a *lot* or a portion of common property on which an access route is located in a bare land strata plan.

SCRAP METAL means:

- (1) previously used ferrous metal made principally of iron, steel, or tin;
- (2) previously used non-ferrous metal including all metal or alloy that is generally free of iron and includes, copper, brass, bronze, aluminum, zinc, magnesium, lead, and nickel.

SCRAP METAL DEALER means any *person* licensed pursuant to the *City's* Business License Bylaw, in force from time to time, to carry on the *business* of selling, purchasing, or otherwise dealing in *scrap metal*.

SECONDARY ACTIVE STREET FRONTAGE means a *street* frontage delineated as such in an Official Community Plan and along which development will provide a continuous, active, ground-oriented *commercial, residential, or civic* façade or street-wall.

SERVICE STATION means a *commercial use* providing for motor vehicle fueling or *electric vehicle charging service*, or both; may include the *retail* sale of automobile accessories, car wash and vacuum stations, and the rental of *trailers* and motor vehicles as *accessory uses* on the *lot*.

SERVICING OFFICER means the servicing officer for the *City* as designated by *Council* and as described in the Local Government Act.

SINGLE-DETACHED DWELLING means a *residential use* comprising a single *principal building* on a *lot*, which contains a single *principal dwelling unit*; may include *one-family residential*.

SLEEPING UNIT means one or more rooms containing no *cooking facilities* or sink, used for the lodging of *persons*.

SMALL-SCALE RESIDENTIAL means a *residential use* comprising one or more *dwelling units* on a *lot* in attached, detached or semi-detached *building forms*; may include *single-detached dwelling, accessory dwelling unit*, a range of *principal or accessory* –plex configurations such as *duplex, triplex, fourplex, multiplex* but **excludes** *lock-off unit, street-oriented village home, townhouse, apartment*.

SPECIAL EVENT means a circus, concert, temporary amusement park, show, farmers market, cultural festival or other itinerant show or entertainment on *City* property for which a valid Facility Use License has been issued by the *City's* Parks, Recreation and Culture Department.

SPECIAL EVENT VENDING BUSINESS means a *business* offering for sale goods or services during a *special event*.

STOREY means that portion of a *building* which is situated between the top of any floor and the top of the floor next above it, and if there is no floor above it, that portion between the top of such floor and the ceiling above it; **excludes** a basement and cellar.

STRATA LOT means a *lot* shown on a strata plan.

STRATEGIC HOUSING means special needs or affordable housing as contemplated under Section 482 of the Local Government Act and includes *purpose-built rental*.

STREET means a highway that is used for general traffic circulation, **excludes** *lanes*.

STREET-ORIENTED VILLAGE HOME RESIDENTIAL use means a *residential use* consisting of one *dwelling unit* per *principal building* vertically attached by *party walls* to one or more *principal building/s* with each individual *principal building* located on a separate *lot* (including a *strata lot*) abutting a *street* and a *lane*; except that in the case of special needs and/or affordable housing on a site or sites owned by the *City of Coquitlam* and/or a registered non-profit agency, each *principal building* may contain more than one *dwelling unit*.

STRUCTURE means any construction fixed to, supported by or sunk into land or water.

STUDIO DWELLING UNIT means a *dwelling unit* containing one *habitable room* plus *kitchen* facilities and a *bathroom*.

SUBDIVISION means the division of land into one or more parcels by plan, descriptive words, or other under the Strata Property Act or Land Title Act.

SUBDIVISION AND DEVELOPMENT SERVICING BYLAW means *City of Coquitlam* Subdivision and Development Servicing Bylaw No. 3558, 2003 as amended or superseded from time to time.

SUPPORTIVE HOUSING means housing that is designed to be accessible, in which housing and a range of hospitality services are provided by or through the operator and any personal care for residents is provided by someone other than the operator.

TANDEM PARKING means two *parking spaces*, where one *parking space* is placed behind another *parking space*, such that one *parking space* has unobstructed access to a drive aisle, driveway, *lane*, *roadway*, or *street*.

TATTOO PARLOUR means an establishment in the *business* of creating permanent tattoos for decorative purposes but does not mean aestheticians who provide permanent and semi-permanent makeup services.

TEMPORARY BUILDING means a *building* which is used for specified period of time, at the end of such time the *building* can be removed from the *lot*.

THIRD PARTY HOUSING PARTNER means an entity that has entered into an agreement with the *City* and a developer of rental housing units to provide *resources* dedicated to managing the units.

THREE-PLUS BEDROOM RENTAL UNIT means a *dwelling unit* in a *purpose-built rental* that contains three or more *bedrooms*.

TOA Tier 2 means all land within a prescribed distance greater than 200 metres and up to 400 metres from a prescribed rapid transit station in accordance with the Local Government Transit-Oriented Areas Regulation, and as described in the City of Coquitlam Transit-Oriented Areas Designation Bylaw No. 5393, 2024.

TOA Tier 3 means all land within a prescribed distance greater than 400 metres and up to 800 metres from a prescribed rapid transit station in accordance with the Local Government Transit-Oriented Areas Regulation, and as described in the City of Coquitlam Transit-Oriented Areas Designation Bylaw No. 5393, 2024.

TOURIST ACCOMMODATION means a *use* providing for the accommodation of the transient public in individual *dwelling units*, or *sleeping units*, or providing space for *recreational vehicles* or *trailers* for this accommodation, for a continuous duration of not more than 60 days; may include *accessory* dining facilities, but **excludes** *mobile homes*.

TOWNHOUSE means a *residential use* comprising two or more *dwelling units* separated one from another by *party walls*, where the units are side-by-side or stacked on top of each other, with each *dwelling unit* having a separate, direct entrance to outside without an enclosed common corridor and includes all row, linked, patio, garden, court or other housing which meets such criteria; **excludes** *small-scale residential*.

TRADE SCHOOL means a post- secondary *commercial school* in which a technical trade related to construction, electronics, mechanical, transportation (automotive, marine or aviation) or similar skilled trades is principally taught.

TRAILER means any vehicle, coach, house-car or conveyance designed and licensed to travel on the highways, constructed or equipped to be used as temporary living or sleeping quarters by travellers.

TRANSIT-ORIENTED AREA or *TOA* means all land within a prescribed distance from a prescribed rapid transit station in accordance with the Local Government Act and Local Government Transit-Oriented Areas Regulation, and as described in the City of Coquitlam Transit-Oriented Areas Designation Bylaw No. 5393, 2024.

TRANSITIONAL HOUSING mean independent, temporary housing that provides support services for people who are homeless or at-risk of homelessness.

TRANSPORTATION DEMAND MANAGEMENT means the provision of continuous services or facilities that reduce the demand for private vehicle *use* or an *off-street parking space*.

UNDERGROUND PARKING means an *off-street parking use* contained within an *underground structure*.

UNDERGROUND STRUCTURE means construction of any kind sunk into the ground and which at no point projects above *finished grade* except at driveway and stairwell entrances and except as permitted by this Bylaw.

USE means the purpose for which any *lot, building or structure* is designed, arranged or intended, or for which it is occupied or maintained.

VETERINARY SERVICE means a facility for the care, examination, diagnosis and treatment of sick, ailing, infirm or injured pets, including medical intervention and surgery, radiography, anesthesia, and may include accessory short-term accommodation for sick, ailing, infirm or injured pets, and the *accessory retail* sale of medicine and pet supplies, but **excludes** animal breeding, *pet care services* and *animal shelters*.

WALL means any *building* element with a slope of 60 degrees or more to the horizontal; **excludes** a *wall* which is utilized as a *fence*, or a retaining *wall*.

WHOLESALE SALES means the storage and sale of goods to a retailer or another wholesaler, rather than to the end consumer or general public.

WINE STORE means a *use* where the retail sale of alcoholic beverages limited to wine for off-site consumption is the *principal use* and is licensed under the Liquor Control and Licensing Act.

202 Interpretation

(1) Gender/Number

Wherever the singular or masculine is used in this Bylaw, it includes the plural or the feminine or body politic or corporate as the context or the parties so require.

(2) “Must” Imperative

In this Bylaw, “must” is to be constructed as imperative.

(3) Alignment with Other Orders of Government

Any enactments, codes or regulations referred to in this Bylaw are references to provincial or federal enactments, codes or regulations as amended, revised, consolidated or replaced from time to time, and any bylaw referred to in this bylaw is a bylaw of the *City* as amended, revised, consolidated or replaced from time to time.

(4) Severability

In this part, section, subsection, paragraph or any other portion of this Bylaw is held to be invalid by a court of competent jurisdiction, the invalid portion must be severed and the remainder of this Bylaw is deemed to have enacted without the invalid portion.